

MINUTES

CoC Meeting 5/8/2024

44 Members in attendance (see sign-in sheets)

Minutes from 4/10/2024 meeting were approved. Motion to approve was made by Chris Hockman – 2nd by Jim Gagnon

Tyler Evans, Director of Business Development gave a presentation on Emerald Coast Behavioral Hospital.

Topics covered included:

- A brief history of Emerald Coast Behavioral Hospital, its mission, and place in the Northwest Florida community.
- The Child and Adolescent Program was profiled including both inpatient and outpatient treatment. Dialectical Behavior Therapy (DBT) was introduced.
- The Adult Program was profiled including both inpatient and outpatient treatment.
- The Military Resiliency Program was profiled and highlights of the program were listed as familiarity with the military environment, personalized treatment, a dedicated gym and open courtyard, off-site therapy opportunities, bi-weekly staff-led town hall meetings, family visitation, and interaction with a therapy dog.
- The Veterans Program was profiled as part of the COMPACT Act which states that any veteran, regardless of VA enrollment status, can access no-cost emergency suicide care whenever and wherever they need it including transportation and inpatient care for up to 30 days and outpatient care for up to 90 days.
- Transcranial Magnetic Stimulation (TMS) was explained along with the benefits associated with this therapy.
- Locations in Mariana and Ft. Walton Beach were offered as part of the Emerald Coast Behavioral Hospital services.



PO Box 549 Panama City, FL 32402 • 850.481.5446 • doorwaysnwfl.org

May 8, 2024

CoC General Meeting

**Grace Presbyterian Church
Airport Road
Panama City, FL**

President
Kay Daniel

Vice President
Jennifer Burkett

Secretary
Miranda Fenot

Treasurer
Laurie Combs

Past President
Bryan Taylor

Members at Large

Pastor Brad Friday
Anne Ramsey
Jo Shaffer
Nick Youtz

AGENDA

Welcome

Approval of Minutes from 4/10/24

Funding Opportunities

**If your organization would like to present at the CoC meeting,
please let us know!**

**Email update –WE are having problems with over 100 bounce-back emails and are trying to
complete an updated email list.**

PLEASE complete the purple form on your table to ensure we have correct emails for all.

Presentation

Emerald Coast Behavioral Hospital

Tyler Evans- Director of Business Development

Announcements

Lunch Provided by Emerald Coast Behavioral Hospital

**I would like to thank Ron Speer of Doorways for being my voice while I recover from
vocal cord issues- restricting my voice as required by my physician.**

Thank you all for understanding- Michael



Emerald Coast Behavioral Hospital

Homeless & Hunger Coalition of Northwest Florida, Inc., dba Doorways of Northwest Florida, is a 501 (c) 3 organization. All donations are tax deductible. Federal ID# 59-2853138 Division of Consumer Services Registration # CH4150. A COPY OF THE OFFICIAL REGISTRATION AND FINANCIAL INFORMATION MAY BE OBTAINED FROM THE DIVISION OF CONSUMER SERVICES BY CALLING TOLL-FREE (800-435-7352) WITHIN THE STATE. REGISTRATION DOES NOT IMPLY ENDORSEMENT, APPROVAL, OR RECOMMENDATION BY THE STATE.

Northwest Florida Continuum of Care

Bay • Calhoun • Gulf • Holmes • Jackson • Washington

NWFL CoC Monthly General Meeting Agency Reporting Form

To help with the minute's process, please include a written agency report and return to folder for Doorways to include in the monthly minutes. Thank you!

Agency Name	BFA/PIONEER BAY
Contact Information	Anada Liptrot 850 381 5377 nandholistic@gmail.com

NOTE: If you have a flyer for distribution, please include with this form.

Brownfields Job training Program
In part St Joe Fl.
Offering a 6 week Job Training
with Certifications in

- * OSHA Hazwoper 40hr
- * OSHA 30 hr general Industry (Construction)
- * GIS Drainage + Infrastructure
- * field trips + MORE.

\$100 weekly stipened for Attendance.
Some
Transportation will be Available
or Car pool.



GAIN SKILLS
JUMPSTART

YOUR CAREER

Brownfields Job Training Program



Join our
6-Week

Tuition-FREE
PROGRAM

*Learn job safety tools and how to
conduct hazardous waste cleanup,
decontamination, assessments,
water/soil sampling, and much more!*



**Weekly
Stipends
Provided!**

INFORMATIONAL SESSION

May 24, 2024

12-2:00 PM EST

at Zion Fair Missionary Baptist Church
280 Ave. C | Port St. Joe, Florida

TRAINING BEGINS: June (TBD), 2024
Monday-Friday 8:00 AM-5:00 PM EST
at Zion Fair Missionary Baptist Church

COURSES OFFERED

- OSHA HAZWOPER 40hr
- OSHA 30hr General industry
- GIS Drainage+Infrastructure
- Survey Mapping
- Stormwater/Water/Wastewater
- Field Trips
- HAZMAT Waste
- Lead, Asbestos and Mold
- Phase I & II Site Assessment
- And MORE



*Eligibility: Must be
18 Years or Older*

BACKGROUND FRIENDLY!

For applications, please call or email:
Dr. Krystal Hepburn | 813-658-8363
Pioneer Bay CDC | 850-227-5662
Email: pioneerbaycdcnpjs@gmail.com



Funding for this
project is provided by
Environmental
Protection Agency



CareerSource
GULF COAST



WWW.REDEVELOPINGNPSI.ORG

TYNDALL AFB ELEVATE EXPO

PRACTICAL TIPS & RESOURCES FOR DAILY WELL-BEING



1000 : KRISTINA WILLIAMS
Putting Yourself First



1100 : DJ KINT
Florida Veterans Support



1200-1400 : TODD HERENDEEN
Live Music & Entertainment



THURSDAY
MAY 23, 2024



0900-1400



HORIZON'S
PARKING LOT



FREE FOOD, PRIZES,
& ENTERTAINMENT

OPEN TO ANYONE WITH BASE ACCESS
Food available starting at 1030
while supplies last

PRESENTED BY:



INTEGRATED RESILIENCE OFFICE

TYNDALL AIR FORCE BASE

NWF Health
Network



***NO FEDERAL ENDORSEMENT INTENDED**

TYNDALL AFB ELEVATE EXPO

VENDOR LIST

OFF BASE RESOURCES

- NWF HEALTH NETWORK
- AMERICAN FOUNDATION FOR SUICIDE PREVENTION
- ALZHEIMER'S ASSOCIATION
- COOL TO BE KIND TAY
- ANCHORAGE CHILDREN'S HOME
- BAY COUNTY VET CENTER
- EMERALD COAST HOSPICE
- EARLY LEARNING COALITION OF NW FLORIDA
- FLORIDA SPRINGS WELLNESS AND RECOVERY CENTER
- GULF COAST SEXUAL ASSAULT PROGRAM & GULF COAST CHILDREN'S ADVOCACY CENTER
- CHEMICAL ADDICTIONS RECOVERY EFFORT (CARE)
- WRAPAROUND BAY
- LIFE MANAGEMENT CENTER OF NORTHWEST FLORIDA
- HEALING HORIZONS
- FLORIDA DEPT OF CHILDREN AND FAMILIES
- TRUE ADDICTION AND BEHAVIORAL HEALTH
- PAN CARE
- EMERALD COAST BEHAVIORAL HOSPITAL
- EMPLOYU
- SPARE
- GULF COAST LGBTQ+ CENTER, INC.
- FLORIDA VETERANS SUPPORT LINE
- OXFORD HOUSE INC
- BASIC NWFL, INC
- BAY COUNTY COUNCIL ON AGING
- HABITAT FOR HUMANITY OF BAY COUNTY
- THE EVERS HOUSE
- PARENT CHILD INTERACTION THERAPY
- TWIN OAKS ADOPTIONS
- CIRCUIT 14 HUMAN TRAFFICKING TASK FORCE
- NWFL CARES, INC
- LEGAL SERVICES OF NWFL
- HAVEN HOUSE

ON BASE RESOURCES

- MILITARY & FAMILY READINESS CENTER
- EXCEPTIONAL FAMILY MEMBER PROGRAM
- CHILD AND YOUTH PROGRAMS
- SPECIAL VICTIMS COUNSEL
- DOMESTIC VIOLENCE VICTIM ADVOCATE
- HEALTH PROMOTION
- FAMILY ADVOCACY
- CIVILIAN HEALTH PROMOTION SERVICES (CHPS)
-SCAN THE QR CODE TO SIGN UP IN ADVANCE FOR A FREE WELLNESS SCREENING



- FL NATIONAL GUARD INTEGRATED PRIMARY PREVENTION PROGRAM (IP3)
- DAF EMPLOYEE ASSISTANCE PROGRAM (EAP)
- MILITARY FAMILY LIFE COUNSELORS
- OPERATIONAL SUPPORT TEAM (OST)
- SCHOOL LIAISON OFFICER
- RELIGIOUS AFFAIRS TEAM/CHAPLAIN CORP
- SEXUAL ASSAULT PREVENTION AND RESPONSE
- NEW PARENT SUPPORT PROGRAM
- C4

NWF Health
Network

HELP LOCAL CHILDREN



850.264.6713

Many children in foster care have to leave their school and friends to live in a new community. You can make a difference.

**IT COULD BE YOUR
CHILD'S BEST FRIEND.**

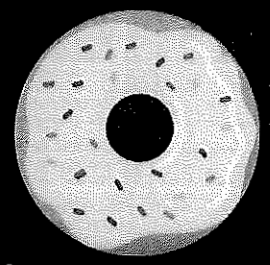


FOSTER PARENTS NEEDED!

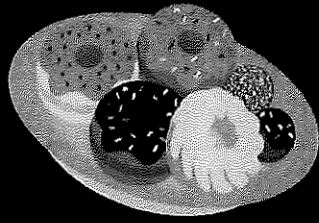
You can help ensure that local students get to stay connected to their teachers, friends, and support networks.



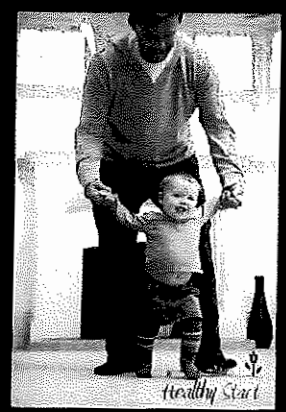
Dads & Donuts at Dan-D-Donuts Friday, June 14th



1147 Harrison Ave, Panama City
7:00AM until 11:00AM



**Learn about our
T.E.A.M.Dad Program and
Register to win a
gift basket worth \$500**



Sponsored by Bay, Franklin, Gulf Healthy Start Coalition, the State of Florida, Department of Health and the Healthy Start MomCare Network, Inc. and the State of Florida, Agency for Health Care Administration. A copy of the official registration and financial information may be obtained from the Division of Consumer Services by calling toll-free (1-800-435-7352) within the State or visiting the website at www.FloridaConsumerHelp.com. Registration does not imply endorsement, approval, or recommendation by the State. Registration #:CH5231t



THE SALVATION ARMY
TRANSITIONAL HOUSING

*GRAND OPENING
AND RIBBON CUTTING*

10:00 AM | **10** | May
Friday | | 2024

1824 15TH ST. PANAMA CITY, FL 32401

Don't miss it!

RSVP to
Ashley.Gentry@uss.salvationarmy.org
or
(850) 344-7360

Tour of the Facilities and Refreshments following the program





For More Information
 +850-821-2126
 www.EWELLSOL.com

Summer
CAMP UNLIMITED S.T.E.M

from 7:30 am to 5:30 pm

Sensational Science~ Session 1

Learn to observe and describe the natural surroundings by identifying and experimental. Pursue knowledge and understanding by exploring earth, structure, and space.

\$150

June 3 – June 7

Riveting Robotics ~ Session 2

Use innovative technology to assemble and create new devices. To program, modify, and build imaginative robots.

\$150

June 24 – June 28

Engineering Ingenuity ~ Session 3

Expand the process of creating and building structures using mathematics to design, enhance, plan and construct materials for engineering projects.

\$150

July 8 – July 12

Measurable Mathematics ~ Session 4

Discover the study of numbers and how to measure, find rates, and find and compute mathematical equations related to each other and the real world.

\$150

July 22 – July 26

Regular Day Camp available for additional fee – In between event weeks

All 4
 \$550

EPIC

Recovery Program Details

The EPIC Recovery Program is a 24-month, evidence-based program designed to provide help and services for patients experiencing psychosis. Each situation is approached with respect for the patient and the understanding that **recovery is possible**.

1 MEDICAL TREATMENTS

Treatment of symptoms with medication to allow therapy to be effective.

2 EDUCATION

Education for the individual and family on living with the illness.

3 SOCIAL

Building and renewing confidence to face each day.

WHAT DOES THE TREATMENT COST?

All of the EPIC services are FREE and include:

- Patient interventions and treatments
- Psychiatric services
- Medication management
- Assistance with employment and education
- Resiliency training & symptom coping skills
- Family & peer counseling
- Transportation assistance

A New Approach
A Better Way



Life Management Center

Of Northwest Florida, Inc.

525 East 15th Street
Panama City, FL 32405

lmccares.org

REACH
OUT:



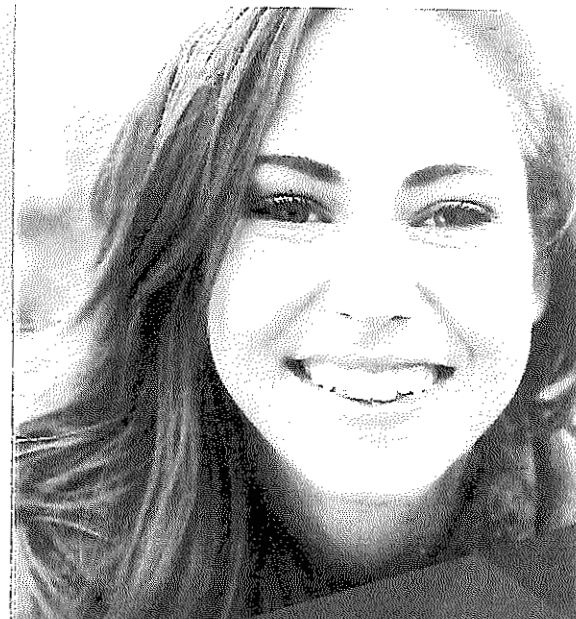
epicprogram@lmccares.org

THE EPIC PROGRAM

is exclusive to Life Management Center as one of only two facilities in the State of Florida offering this unique approach to patient care.

Sponsored by:

Life Management Center of Northwest Florida, Inc., Big Bend Community Based Care, and the State of Florida, Department of Children and Families



EPIC RECOVERY PROGRAM

PSYCHOSIS

HOPE FOR THOSE EXPERIENCING

Delusions

Mood Changes

Decline in Self Care

Withdrawal from Other

Call for hope:

850-522-4488



PSYCHOSIS PREVENTION & CARE



EPIC Recovery Program



ELIGIBILITY

Develops in the late teen years or early 20s. You may be a candidate to join the EPIC Recovery Program if you:

- Live in Cook County
- Are in the ages of 16–35
- Have had less than 12 months of symptoms or psychosis

Early detection leads to improved results.

Understanding PSYCHOSIS

Psychosis is a general term used to describe a severe mental condition where a person has lost some contact with reality. We understand that hearing the term may seem overwhelming but with early detection, treatment and a strong support system, recovery is possible.

Some disorders include:

- Schizophrenia
- Schizoaffective Disorder
- Brief Psychotic Disorder
- Some Severe Bi-Polar Disorders
- Major Depressive Disorders

Identifying THE SYMPTOMS

Determining if a loved one needs professional attention can be difficult. Symptoms may seem minor or insignificant at first and written off as “just a phase”. If you’re concerned your loved one may be experiencing psychosis, common symptoms to look for include:

- **Serious Changes in Emotion & Motivation**
More depressed or anxious than usual.
- **Severe Changes in Thinking & Perception**
Difficulty maintaining concentration or expressing that others around them have changed. He or she may also respond to hallucinations by talking to someone that others cannot see or hear.
- **Significant Changes in Behavior**
Changes in sleep patterns, social interaction, school performance or ability to work.

Those suffering from psychosis usually experience it in episodes. The signs and symptoms vary by each person so the changes in behavior must be considered against that person’s typical patterns.

“ I feel a lot more confident about what I can do, what I have the power to change, and what I can’t.”

READ MORE SUCCESS STORIES: Imccares.org